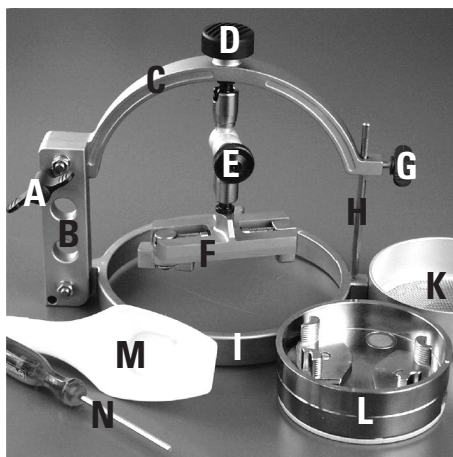
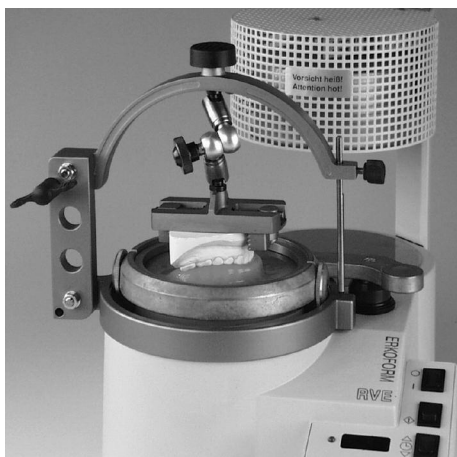


OCCLUFORM, instructions for installation and application

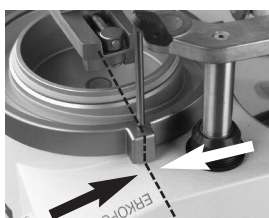


Contents:

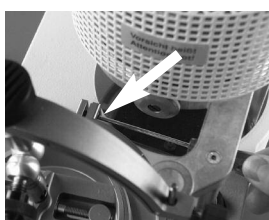
OCCLUFORM, complete
order no.: 188 080

A, swing bolt	H, supporting pin
B, column	I, fixation frame
C, occluding bow	K, pot for granules
D, press button	L, model pot (with centering plate)
E, arresting joint	M, granules
F, model plate	N, hexagonal wrench, size 3
G, supporting pin fixation	

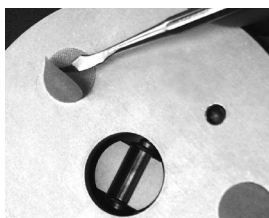
Installation instructions



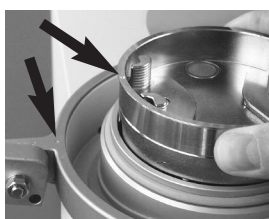
1. Put the fixation frame onto the housing of the ERKOFORM-RVE radially to the RVE unit (supporting pin showing to the kink of the housing above the wording ERKOFORM).



2. Press the fixation frame downwards until it stops and tighten the socket head cap screw.

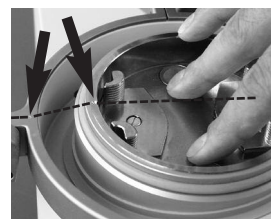


3. Upon delivery the centering plate is fixed at the bottom of the model pot. Remove the protective foil of the adhesion surface area from the centering plate.

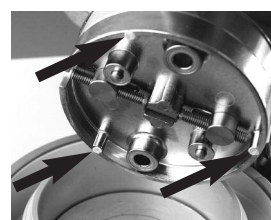


4. Push the centering plate with the model pot into the cleaned pot of the unit, but do not press it on yet...

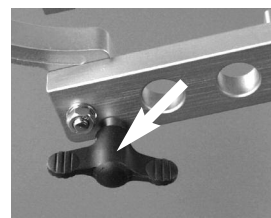
5.align the model pot in such a way that the markings of the fixation frame and the reception pot are opposite. Only then press firmly!



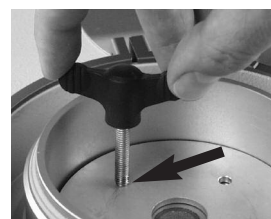
6. Pull out the model pot again and remove the adhesive points or rests at the bottom of the pot and the centering plate.



7. If the alignment of the marking points is not correct, tightly screw the swing bolt...



8. ...into the tapped hole of the centering plate until it can be removed. Afterwards fix the centering plate to the model pot again (for example with small ERKOGUM bits) and restart with point 4.



Instructions to refill the hydraulic articulation



1. When the closing power of the arresting joint gets weak, add oil as shown. Open the black nut completely, remove in upright position.



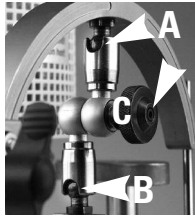
2. Fill in oil (machinery oil) until the tube is almost full.



3. Close again and check closing strength.

If the system obviously leaks, it needs repair.

Positioning of the arresting joint



1. Please open the arresting joint (C) and align A, B and C as shown on the picture.



2. Now you can put the upper model plate into the highest position.



3. This is the best starting position to articulate the models.

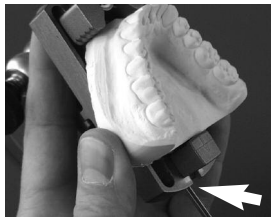
Application instructions



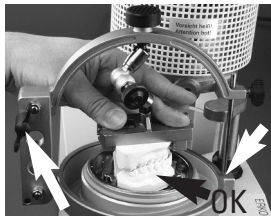
1. Clamp the model where the plate should be thermoformed on in the model pot. It may be useful to clamp the model angularly (for example in case of large undercuts).



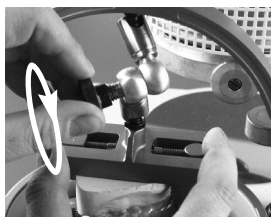
2. Put the model pot with the model into the pot of the unit. If the markings are opposite, the model pot will be engaged in the centering plate.



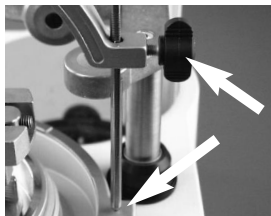
3. Clamp the model of the opposing bite in the upper model plate.



4. If the model of the upper jaw is in the model pot, block **the upper joint** of the column with the swing bolt (left arrow), see picture. If the model of the lower jaw is in the model pot, block **the lower joint**. For the articulation the arresting joint has to be flexible, hold the model plate with the model and close the occluding bow until the supporting pin is fixed. Articulate the models, ideally with a construction bite.



5. Hold the upper model-plate and fix the arresting joint.



6. If there is no construction bite available, the bite can be lifted with the supporting pin. This causes an additional distal bite raising (see next pages). Reopen the occluding bow with the fixed opposing bite model.

7. Fill up the model pot with high-grade steel granules (for this purpose the model pot can also be taken off).



8. The granules may also be put below the model and be well compressed.



9. Insulate the models with colourless insulating compound (ISOLAC, 624 050).



Now thermoform according to the ERKOFORM-RVE instructions.

10. Afterwards **immediately** close the occluding bow until the supporting pin gets contact, while the hand remains on the press button.



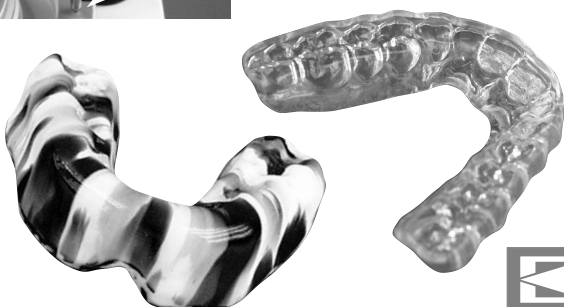
11. The opposing bite is impressed. Allow to completely cool down and open the bow.



12. Lift the foil reception of the unit, at the same time the model pot will be lifted. Hold this one, open the foil holding frame and take off the model pot with the foil.



The delivery contains a pot for granules that will be used instead of the model pot if the unit will be operated without OCCLUFORM.

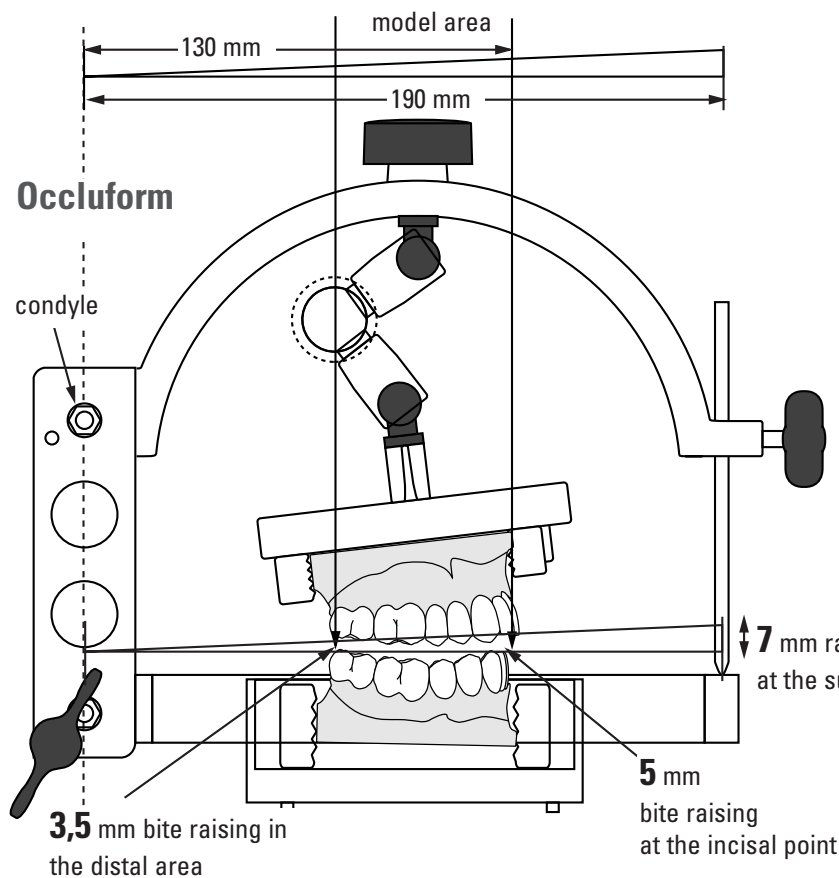


ERKODENT®

OCCLUFORM in comparison with an articulator

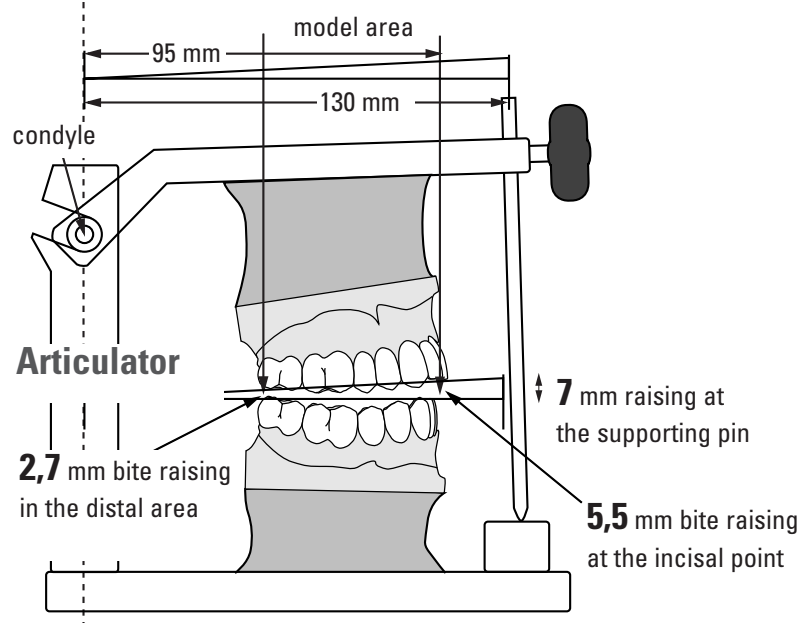
The OCCLUFORM is an occludator with bigger measures than the average movement measures in an articulator. Given measures of the thermoforming unit allow no smaller construction, therefore a bite lifting only by the supporting pin of the OCCLUFORM always causes an additional distal bite raising. For some treatments this might be requested. The best solution to avoid this is the availability of a construction bite taken at the patient. This construction bite allows to articulate the models in the OCCLUFORM and guarantees the same bite position later with the appliance (nightguards, mouthguards, monobloc snoreguards, positioners, etc.).

Measures



raising at the supporting pin (all in mm)	bite raising incisal point		bite raising molar area 27/37	
	arti.	occlu.	arti.	occlu.
1.0	0.8	0.6	0.2	0.4
2.0	1.4	1.3	0.7	1.0
3.0	2.0	1.9	1.0	1.5
4.0	2.8	2.6	1.4	2.0
5.0	3.7	3.3	1.9	2.5
6.0	4.6	4.1	2.4	3.0
7.0	5.5	5.0	2.7	3.5

these measures are measured, not calculated
the measuring mistake is + - 0.2 mm



bite raising incisal point	bite raising molar area 27/37	
	arti.	occlu.
1.0	0.3	0.7
2.0	1.0	1.4
3.0	1.5	2.2
4.0	2.3	3.0
5.0	2.6	3.5

these measures are measured,
not calculated
the measuring mistake is + - 0.2 mm

Conclusion: By simply raising the bite at the supporting pin there will be an additional bite raising in the molar area of app. 30 % with the OCCLUFORM compared to an average movement articulator.

Instructions how to obtain average movement measures with the OCCLUFORM

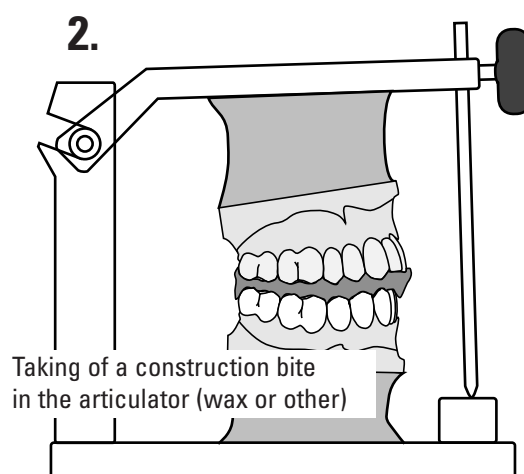
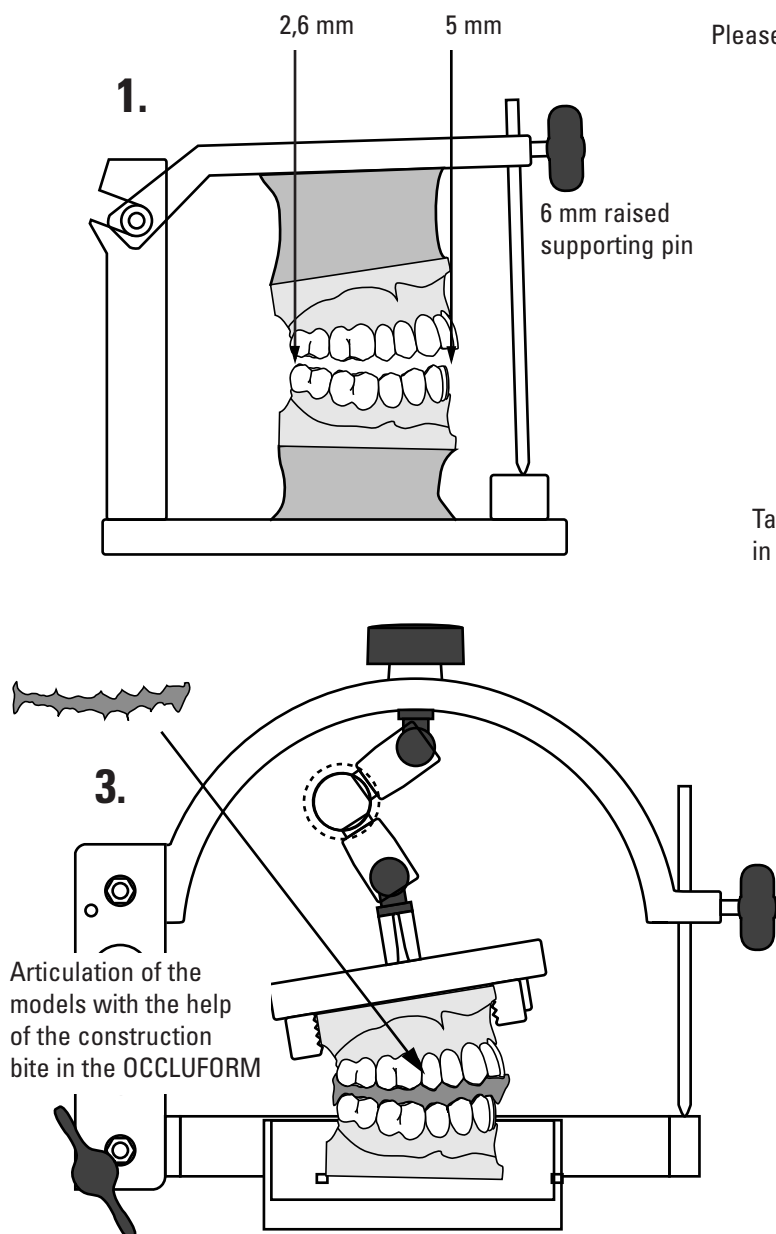
Very often the manufacturer of adjusted splints, nightguards, mouthguards (detailed adjustment) and similar appliances only gets an upper and a lower model or impression with no other help like check bites, construction bites or facebow registrations. In such a case the manufacturer has to relate to the average movement measures and corresponding articulators. Later the dentist has to adjust those appliances in detail in the patients mouth.

In cases where a construction bite is available the models are directly articulated with that bite in the OCCLUFORM. This way the result corresponds exactly to the bite situation of the construction bite. In such a case there is no need for the following description:

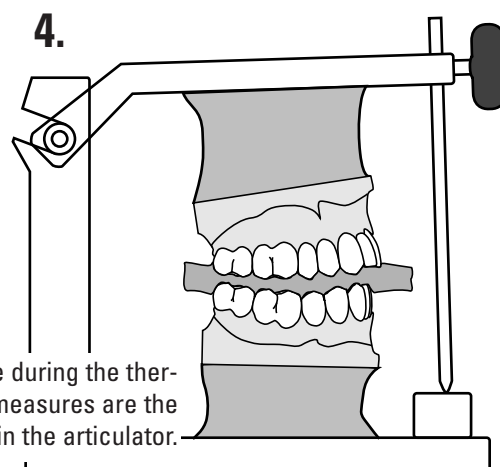
In cases where no construction bite is available, but nevertheless a certain bite raising is required, a construction bite has to be taken in an average movement or full movement articulator to be able to articulate the models with that bite in the OCCLUFORM.

The example here demands a bite raising of app. 5 mm at the incisal point.

Please proceed as follows:



Control of the roughly finished formed splint in the articulator:



If the OCCLUFORM did not move during the thermoforming procedure the measures are the same as found in the articulator.

